

State of Wyoming Corner Record

(In compliance with the *CORNER PERPETUATION AND FILING ACT*, Wyoming Statutes, 1997, Section 33-29-140, et. seq., and the Rules and Regulations of the Board of Registration for Professional Engineers and Professional Land Surveyors)

Reverse side of this form may be used if more space is needed.

Record of original survey and citation of source of historical information (if corner is lost or obliterated). Description of corner monumentation evidence found and/or monument and accessories established to perpetuate the location of this corner. Sketch of relative location of monument, accessories, and reference points with course and distance to adjacent corner(s) (if determined in this survey). Method and rationale for reestablishment of lost or obliterated corner.

G.L.O. Record: Did not have a copy of the original notes for this corner set by U.S. Deputy Surveyor Edward D. Bright in September, 1868.

Found: 9 ins. x 6 ins. x 5 ins. out of the ground granular granite type stone, well marked with three chiseled grooves on the east edge and three chiseled grooves on the south edge. Corner was 19.3 feet south of a east west fence line.

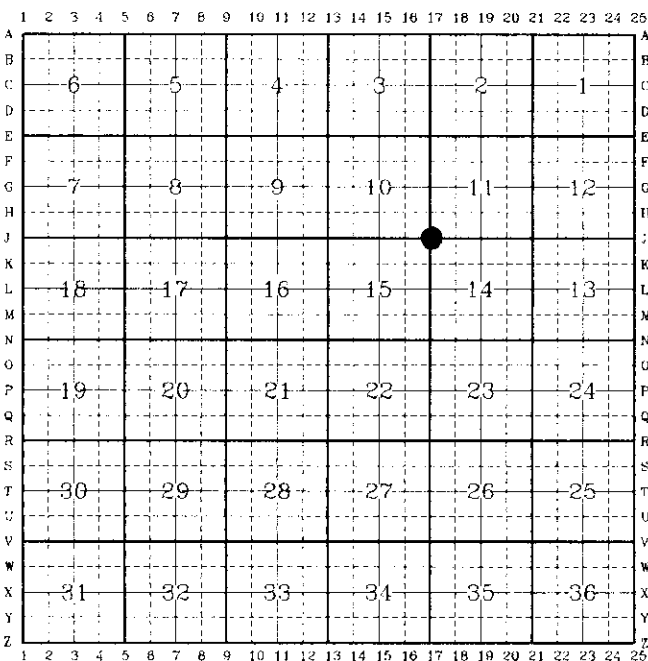
Set: Raised a small mound of stone Southwest of the corner monument.

See back of this sheet for measurements to other found or set monuments in the area.

Date of Field Work: Dec. 18, 1998

Office Reference: A.V.I. Job No.:2-2085C

CROSS INDEX DIAGRAM

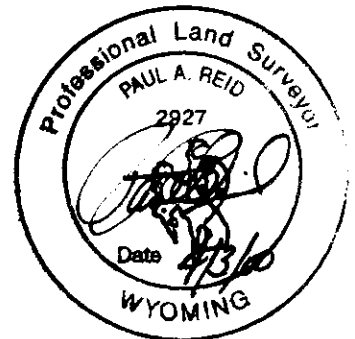


Firm/Agency, Address
 Paul A. Reid, P.L.S.
 A.V.I., p.c.
 2035 Westland Road
 Cheyenne, WY 82001

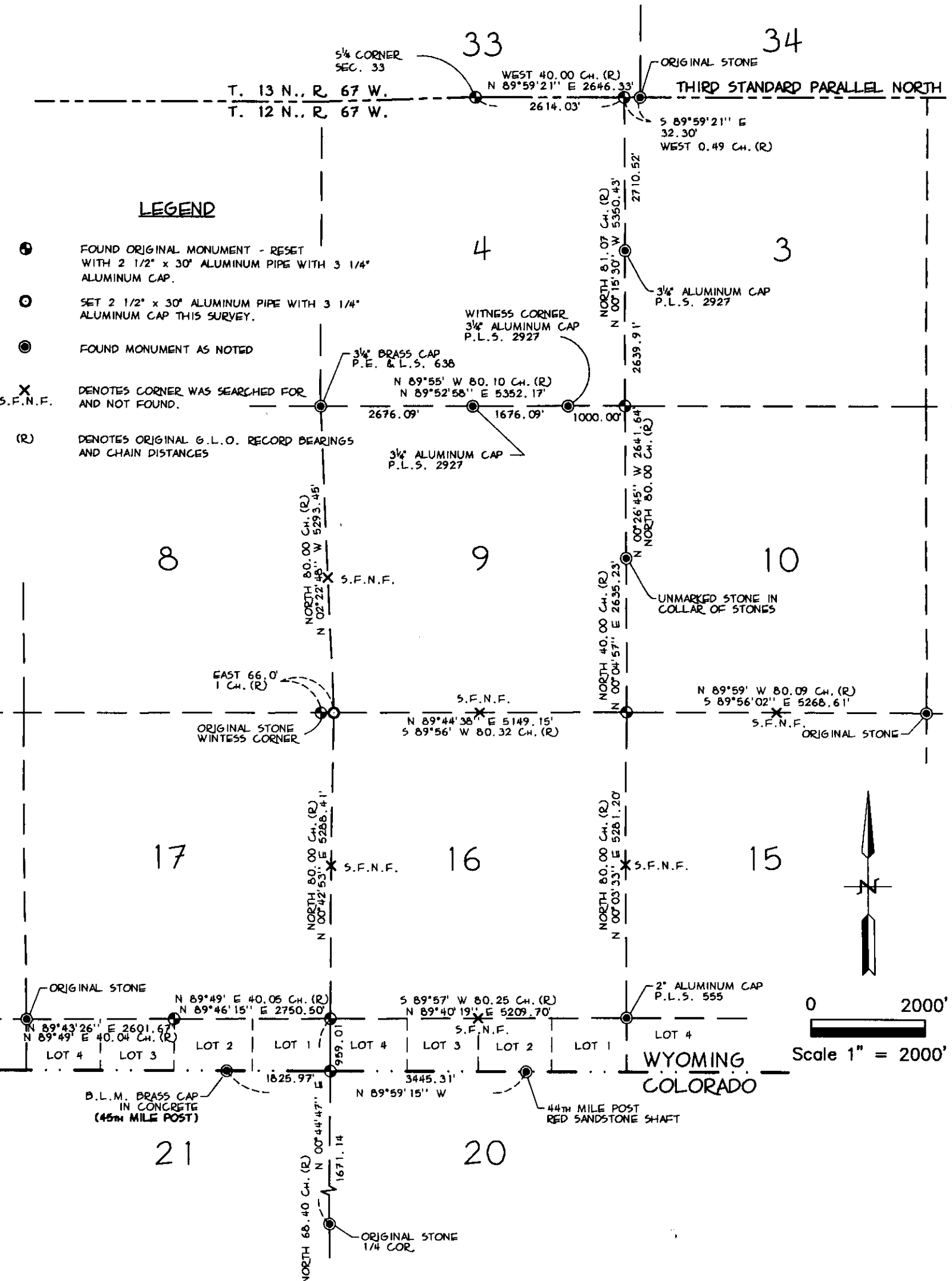
Telephone Number:
 (307) 637-6017

This corner record was prepared by me or under my direction and supervision.

SEAL & SIGNATURE



Corner Name: SE Section:10 T.12N., R.67W.; 6th P.M. Cross-Index No.: J-17
 SBRPEPLS/PLSW:March 1994



SKETCH OF SURVEY
 T. 12 N., R. 67 W., 6TH P.M.
 LARAMIE COUNTY, WYOMING